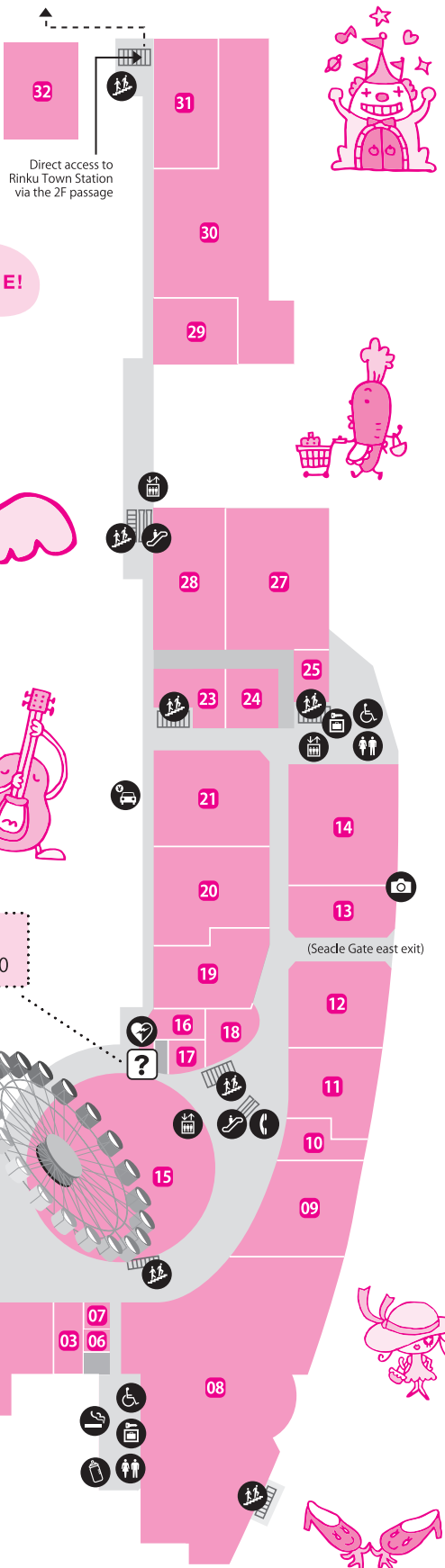


# SEACLE FLOOR GUIDE

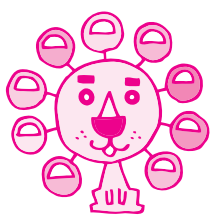
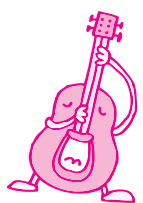
English

1F



WELCOME!

**1F INFORMATION**  
Open Hours: 10:00~20:00



## Fashion

- 09 SUGASHO (Second-hand clothing, miscellaneous goods)
- 12 SHOO·LA·RUE (Ladies' & Kids' Fashion & Sundry Goods)
- 18 DOG DEPT (Ladies' & Men's Fashion, Dog Clothes, Sundry Goods)

## Fashion Goods

- 08 FIT HOUSE (Shoes, Bags & miscellaneous imported items)

## Life style

- 13 Hangaku Soko (half-price warehouse) (Outlet Shop)
- 14 Jibunmakura Home (Bedding)
- 20 Welcia (Drugstore)
- 24 COMPASS (Stationery, fancy items and sundries)
- 27 Seria (100-yen Shop)
- 28 Sundi (Discount supermarket)
- 29 Astro Products (Automobile, motorcycle & bicycle tool sales)
- 30 BIKE WORLD (Sales of Motorcycle Supplies, All Aspects of Mounting)
- 31 Cycle Base, Asahi (Bicycles)

## Service

- 03 Rock Star (Reptile Café & Shop)
- 06 Tsubame Factory (Shoes, bags, accessories, smartphone repair, seals, duplicate keys, watch battery replacement & umbrella repair)
- 07 POLA THE BEAUTY (Beauty salon & Cosmetics)
- 10 Libra Hair Spa (Beauty salons)
- 11 STUDIO ARC (Photo service)
- 17 Y-mobile (Mobile-phone related equipment)
- 19 Wedding Square (Bridal consultation & costume rentals)
- 23 Hoken no Madoguchi (Insurance)
- 25 Travel Wave Kansai (Travel Agency)
- 32 TOYOTA Rental Lease (Rent-A-Car, Lease)

## Theme Park and Amusements Area

- 01 STRIKES (Bowling)
- 02 TAITO F STATION (Amusement arcade)
- 15 Ferris Wheel "Stars over Rinku" (Rinku no Hoshi) (Ferris Wheel)

## Food & Gourmet

- 16 Tully's coffee (Cafés)
- 21 Daikuisan (Sushi train)
- 21 Daikuisan Machinomato



## Business hours information

- Business hours 10:00~20:00  
\* Some shops may have different business hours.
  - Information Counter 10:00~20:00
  - Sundi (Discount supermarket) 10:00~20:00
  - Welcia (Drugstore) 10:00~22:00
  - Restaurants (excluding food courts) 11:00~22:00  
\* Each shop has its own "last order" time.
  - Food Court 10:00~20:00
  - Travel Wave Kansai (Travel Agency) \* Every Thursday Closed  
10:00~19:00 (Over-the-counter business hours 18:30)
  - Hoken no Madoguchi (Insurance) 10:00~19:00
  - Ferris Wheel "Stars over Rinku" (Rinku no Hoshi) 10:00~21:00  
(Tickets are sold until 20:30; last ones accepted at 20:45)  
\* Operation may be suspended due to strong winds or other circumstances.
  - Rock salt RinkunoYu (Bathing facility)  
[Weekdays and Saturdays] 9:00 to 24:00 (Spa reception desk closes at 23:15)  
[Sundays and public holidays] 7:00 to 24:00 (Spa reception desk closes at 23:15)
  - STRIKES (Bowling) [Monday through Friday] 10:00~22:00  
[Saturdays, Sundays, and holidays] 9:00~22:00
- \* Business hours are subject to change.

## Access from Kansai Airport [By train]

Kansai International Airport → Nankai Airport Line  
JR Kansai Airport Line 6 minutes  
Direct to Rinku Town

RINKU PLEASURE TOWN SEACLE

3 Rinku Orai Minami Izumisano-City, Osaka 598-0047  
Phone 072-461-4196 <https://www.seacle.jp/>

- Powder Room
- Multi-purpose Toilet
- Escalator
- Elevator
- Stairs
- Public Phones
- AED
- Smoking Area
- Coin Lockers
- Nursing Room
- ID photos
- Pre-pay for Parking Here
- INFORMATION

# SEACLE FLOOR GUIDE

English

2F

Direct connection to Rinku Town Station

Seacle Gate north exit

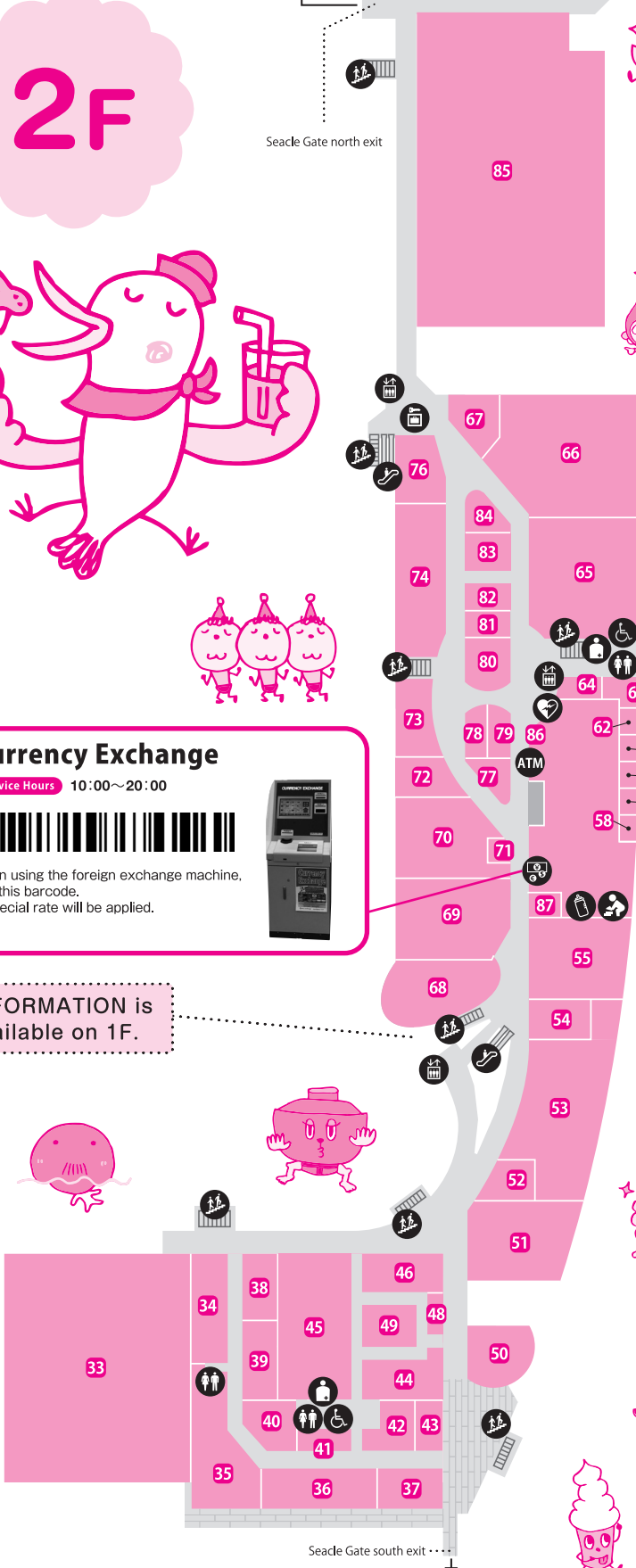
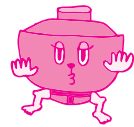


### Currency Exchange

Service Hours 10:00~20:00

When using the foreign exchange machine, use this barcode. A special rate will be applied.

INFORMATION is available on 1F.



Seacle Gate south exit

Rinku Premium Outlets

- Power Room
- Multi-purpose Toilet
- Ostomate
- Escalator
- Elevator
- Stairs
- AED
- ATM CD/ATM
- Coin Lockers
- Nursing Room
- Kids' Room
- Currency Exchange

## Fashion

- 44 G-LAND Extreme (Men's, Ladies' & Kids' Fashion, Accessories, Goods)
- 45 STAYGOLD LSB (Men's, Ladies' & Kids' Fashions, plus longboard skateboards)
- 46 #MEMORY (Men's, Ladies' Fashions & miscellaneous items)
- 49 adams JUGGLER (Men's clothing)
- 51 ORIHICA (Men's & Ladies')
- 52 Lahaina SURF & EARTH (Ladies' Fashion goods, Shoes)
- 53 GU (Ladies', Kids' & Men's, Goods)
- 54 clear OUTLET (Ladies' Fashions)
- 55 Honeys (Ladies' Fashions)
- 68 QuQu (Men's & Ladies')
- 70 Motteke DOROBO!! (Ladies' & Men's Fashions, Sundry Goods)
- 73 STST plus ("Upcycled" golf wear and miscellaneous goods)
- 79 Sugasho Kids (Upcycled kids fashions)
- 80 MARKEY'S (Kids', Ladies' and Men's Fashions & miscellaneous items)
- 81 Re fill/S&H (Fashion Goods)
- 83 LIME, INC. (Ladies' Fashions)

## Fashion Goods

- 69 SHOE PLAZA (Shoes)
- 77 Calinouu Cinquième (Accessories)
- 87 Brand City(Recycle Shop (features overseas brands))

## Life style

- 48 Celule (Cosmetics, Sundry Goods)
- 65 Nishimatsuya Chain (Baby Products, Children's Products)
- 72 MALAIKA (Ethnic items)
- 76 Fishing gear, Ikkyu (Fishing tackle specialty store)
- 78 HOBBY SHOP PLATZ (Trading Cards and Hobbies)
- 82 Koneko Sable (Kitten Sable) (Kid's Candy Shop)
- 84 Hokkaido Monogatari (Souvenirs & special regional products)

## Service

- 86 Seven Bank (ATM)

## Theme Park and Amusements Area

- 33 Rock salt Rinkunoyu (Bathing facility)
- 66 CLUB yu Kids (Games & Amusements)
- 67 #C-pla (Capsule toys)
- 71 PUSH ZONE (Games & Amusements)
- 74 TAITO F STATION, 2nd Store (Theme park, Amusement arcade)

## Food & Gourmet

- 34 Tokishirazu Luxurious Dining (Japanese Cuisine, set meals & Jpanese pub (Izakaya) dishes)
- 35 Saizeriya (Italian Cuisine)
- 36 YAKINIKU BUFFET, Sakon (All-you-can-eat Yakiniku)
- 37 THE KOREAN STYLE OBON PEP (Korean Cuisine)
- 38 Ndanda(Yamagata Pork specialty shop)
- 39 Ootoya Gohandokoro (Japanese-Style Dish, Set Menu)
- 40 Shabu-katsu Katsuki (Creative Outlets Cuisine)
- 41 CRAZY SPICE (Curry Soup, Indian & Nepalese Curry)
- 42 Kawachi Ramen, Kishin (Ramen Noodles)
- 43 SHAO YAN CHUN (Taiwan Café)
- 50 McDonald's (Fast food)
- 85 Ochi Arena (Restaurant)

## Food Court

- 58 Meiki Cantonese(China)Cuisine (Chinese Cuisine & Dim Sum)
- 59 Steakhouse, Honke Matsumoto (Steak Plate)
- 60 Kuchinoya (Rice Bowls)
- 61 Chacha Kyoto (Sweets, Light meals, Beverages)
- 62 Takoyaki Kokoro (Takoyaki, Okonomiyaki, Yakisoba)
- 63 MOS BURGER (Fast food)
- 64 Hanamaru Udon (Sanuki Udon Noodles)

- UnionPay card possible
- ALI PAY
- TAX FREE Japan. Tax-free Shop
- WiFi Free WiFi
- WeChat Pay